

Inner ring

L 313812 A2DXS1A/1

R02

MA210922

GR210922

Main boundary dimensions (mm)

d	180
F	202
B	168

Chamfer angles (degrees)

 β

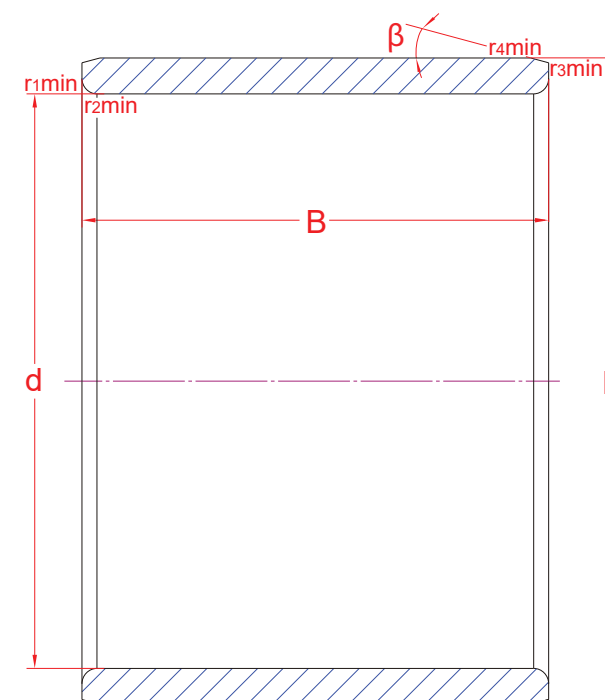
20

Technical data

Basic load ratings (kN)	Dyn.	C_r	-
	Stat.	C_{0r}	-
Mass (kg)		8,55	
Cage material		-	
Min chamfer dimensions (mm)	r_1	2,1	
	r_2	2,1	
	r_3	-	
	r_4	5,0	
Precision class		P6	
e		-	
Bearing clearance (mm)		-	

Technical notes

- Bainite hardened inner ring
- Bearing ring heat stabilized for operating temperatures up to 200 °C
- Bearing ring for application optimized bearing



The sketch is for reference only and may not be representative or indicative of the actual product. Sketch scale is free.

Also refer to RKB Affidavit of Conformance for related compliance to International Standards.

Every care has been taken to ensure the accuracy of the information in the present drawing, but no liability can be accepted for any errors or omissions contained herein, or in case losses and/or damages (direct, indirect, consequential) should occur.

RKB Bearing Industries reserves the right of any amendment without notice.